

CLOSING IMMEDIATE OR 30-60 DAY



**16-290 EQUESTRIAN WAY,
CAMBRIDGE**

**1640 SQ.FT.
\$799,999
plus \$29,500 in luxury features**

rivermillcambridge.ca

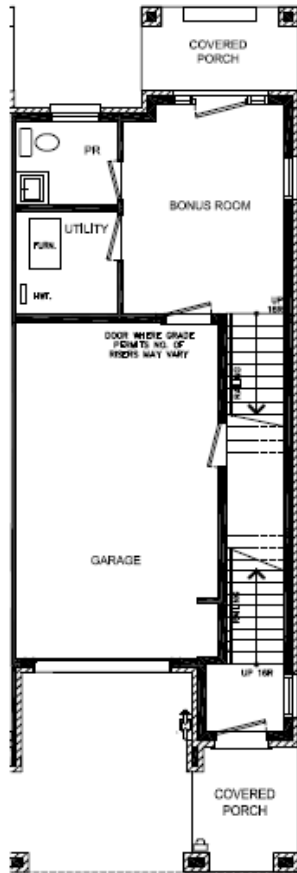
16-290 EQUESTRIAN WAY - 3 STOREY TERRACE TOWNHOME

CRANBERRY

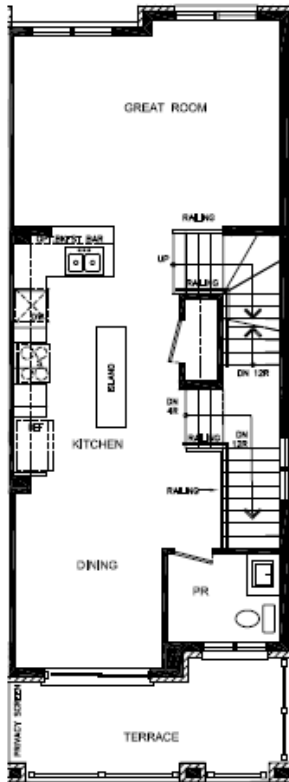
1,640 SQ.FT.

3 BEDROOM

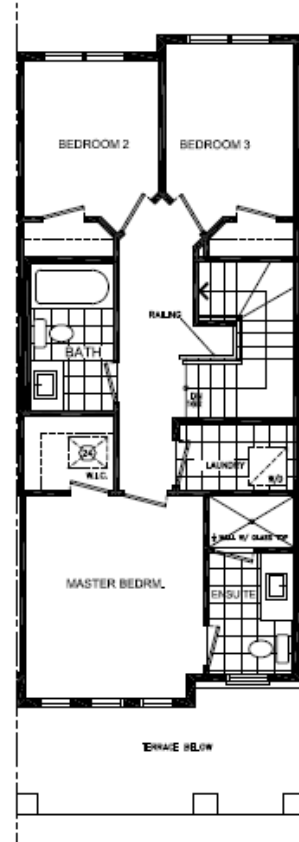
2.5+ BATH



GROUND FLOOR
9' CEILING



SECOND FLOOR
9' CEILING



THIRD FLOOR





PLUS **\$29,850** IN DESIGNER FEATURES, INCLUDES:

- Ensuite with glass shower in Master Bedroom
- Railing in lieu of half walls
- Breakfast bar in Kitchen
- Extended height Upper Cabinets in Kitchen
- Level 2 cabinetry throughout
- Level 2 tile throughout

Samsung Appliances, including:

- Samsung Counter depth fridge
- Samsung Electric smooth top range
- Samsung Dishwasher
- Upgraded Zephyr stainless vent hood
- Whirlpool Stackable washer/dryer

Everything is installed.

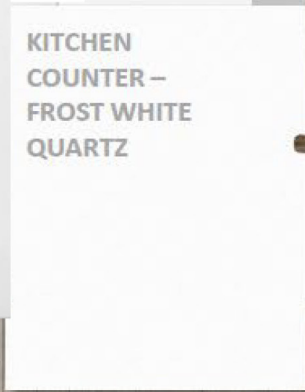
LUXURY FEATURES

COLOUR SELECTION

KITCHEN CABINET
CHARLESTON ORCHID



KITCHEN
COUNTER –
FROST WHITE
QUARTZ

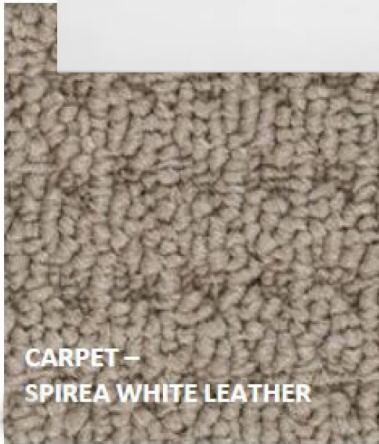


CABINET
HARDWARE –
9677

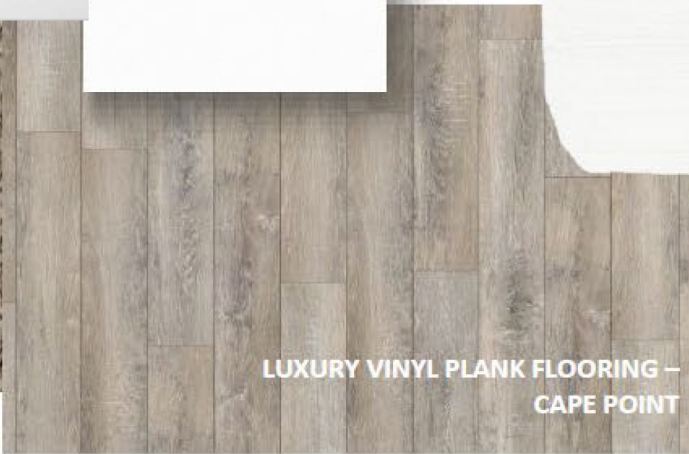


PAINT – ARIA

CARPET –
SPIREA WHITE LEATHER



LUXURY VINYL PLANK FLOORING –
CAPE POINT





**BATHROOM COUNTER –
FROST WHITE QUARTZ**



**BATHROOM CABINETRY –
SHALE GREY CAMDEN
OAK**



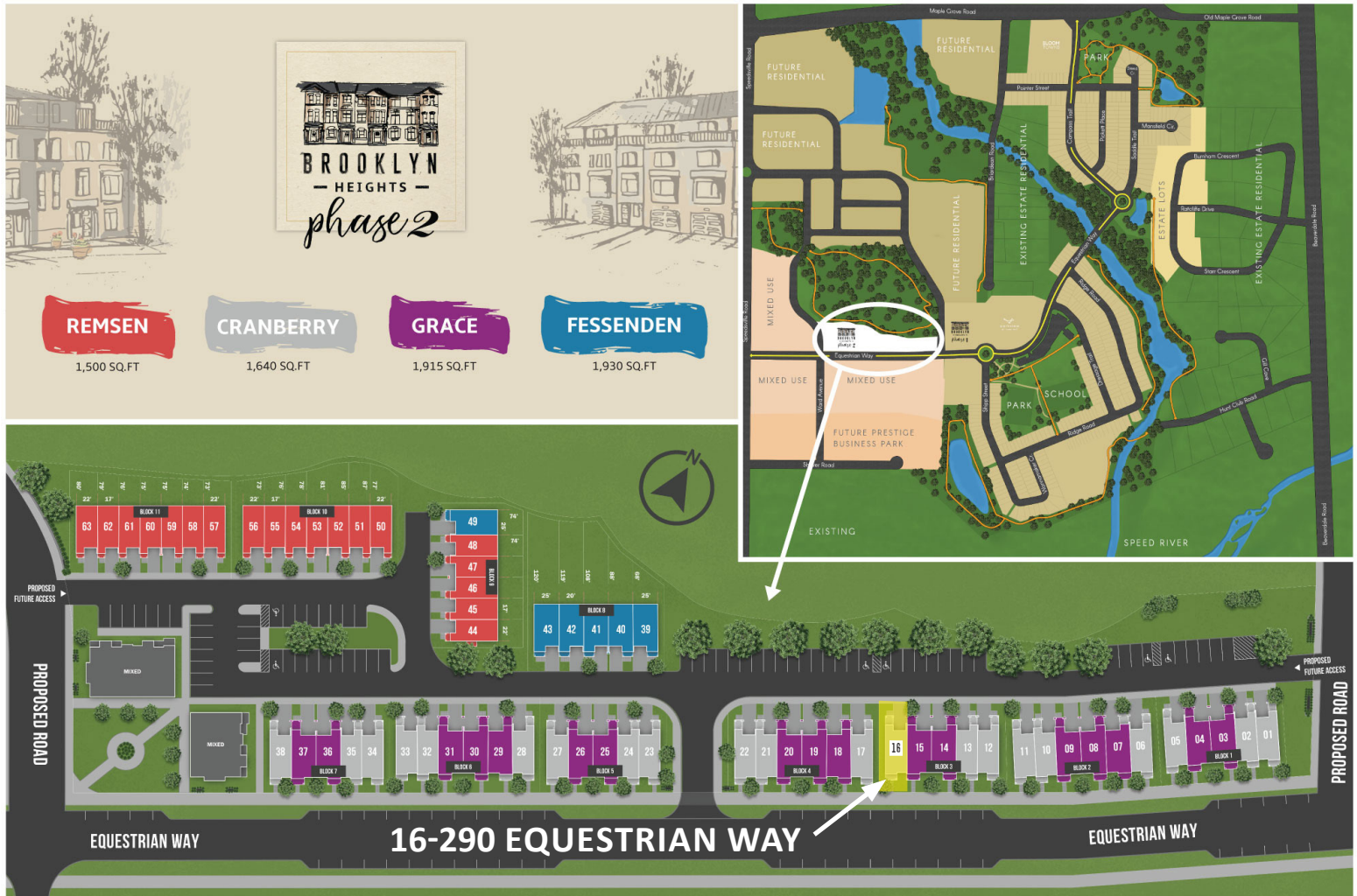
**BATHROOM TILE –
BURLINGSTONE WHITE**



**ENSUITE
SHOWER
FLOOR TILE
WARM GREY
2X2
(WHERE
APPLICABLE)**



SITE MAP



SAVOUR THE BEAUTY

Brooklyn Heights is a neighbourhood rich with possibility, a gathering place for people coming together – whether it's catching up with friends at one of the local cafes or eateries, sharing laughter while browsing the many shops or breathing in fresh air while walking the tree-lined streets or local area. Nestled in the heart of River Mill, a Master Planned Community with two parks, over 9km of walking, hiking and biking trails, the river, and a planned school, Brooklyn Heights offers the perfect balance of nature and convenience, close to shopping and other amenities.

