

**MOVE-IN READY | 60-90 DAYS**



**CHEDOKE**  
HEIGHTS

LIFE IN BALANCE

**19 CADWELL LANE,  
HAMILTON**

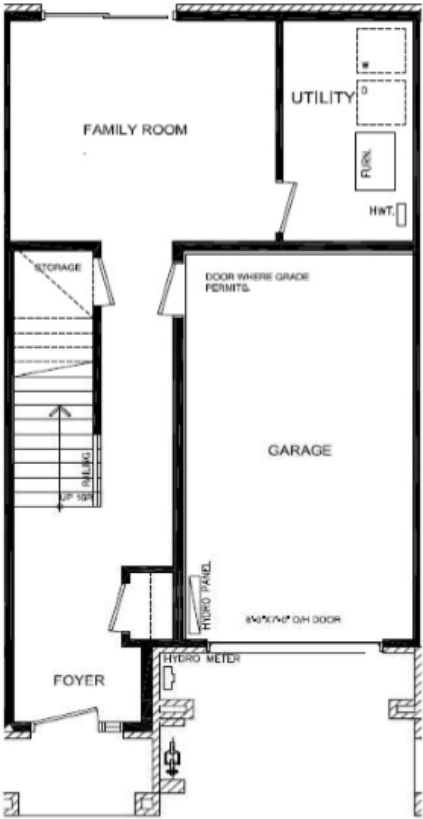
**1930 SQ.FT.  
\$799,999**

[starwardhomes.com](http://starwardhomes.com)

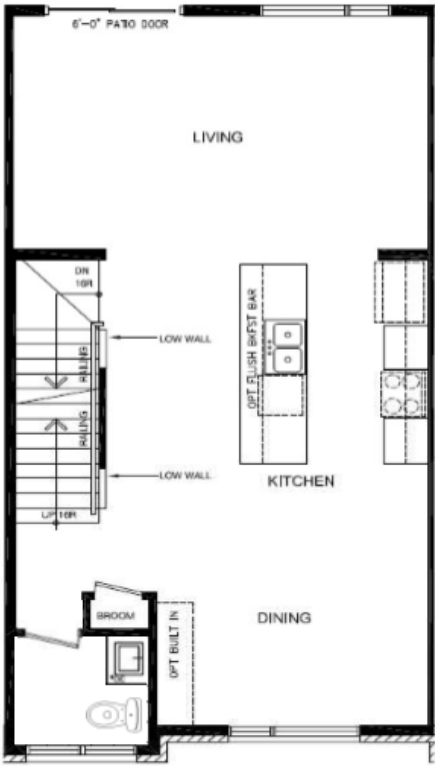
# 19 CADWELL LANE - 3 STOREY TOWNHOME

## FESSENDEN

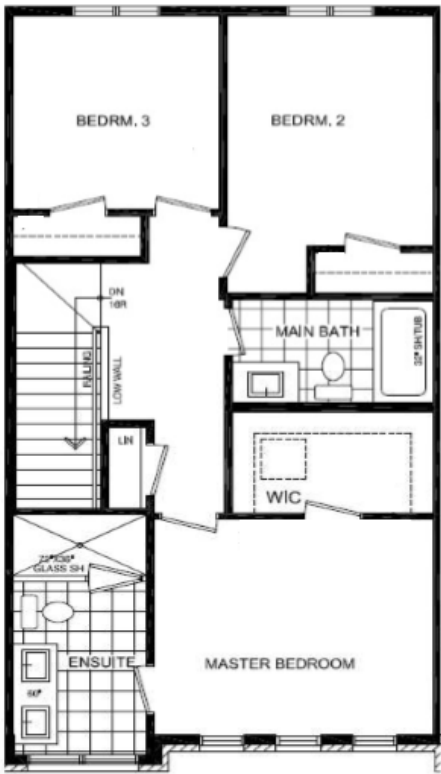
1930 SQ.FT  
3 BEDROOM  
2.5+ BATH



GROUND FLOOR  
9' CEILING



SECOND FLOOR  
9' CEILING



THIRD FLOOR







## PLUS **\$24,065** IN LUXURY DESIGNER FEATURES:

- Glass Shower and Double Vanity in Ensuite
- Level 2 Two Tone Kitchen Cabinetry with extended height uppers and soft close
- Deep Fridge Cabinet
- Breakfast Bar
- Backsplash tile textured Subway in Kitchen
- Level 2 Bathroom Cabinetry
- Level 2 Carpet - cut and loop

# LUXURY FEATURES

KITCHEN LOWERS & ISLAND –  
DUSK NANAIMO

KITCHEN UPPERS –  
SUMMER DROPS NANAIMO

KITCHEN  
COUNTER –  
FROST WHITE  
QUARTZ

BACKSPLASH –  
MARLOW CLOUD GLOSSY  
3 X 12

CABINET  
HARDWARE –  
1146-SS

INTERIOR DOOR  
HARDWARE:  
HALIFAX MATTE  
BLACK

PAINT – ARIA

CARPET – CUT AND LOOP  
ESCAPE TO BALI MACRAME

LUXURY VINYL PLANK FLOORING

BATHROOM COUNTER –  
FROST WHITE QUARTZ

BATHROOM CABINETS –  
DUSK NANAIMO

BATHROOM TILE –  
BURLINGSTONE WHITE  
13 X 13

ENSUITE  
SHOWER  
FLOOR TILE-  
SOHO  
WARM GREY  
2X2

## KITCHEN



Kitchen - Deep Fridge Cabinet  
Extended Height Uppers



Soft Close including  
Bank of Drawers



Backsplash Tile  
3x12 Textured Subway

## GENERAL



Interior Door Hardware  
WEISER Halifax Matte Black



10 Foot Island with Breakfast Bar





# SITE MAP



## LIFE IN BALANCE

Find yourself at Chedoke Heights. Located on Hamilton's west mountain, and with easy access to major transportation routes, universities and colleges, world class hospitals and sports facilities, not to mention the hiking, biking, walking trails and the many restaurants, shopping amenities and cafes, Chedoke Heights is perfectly situated to provide everything you need to live your best life.

