

UNDER CONSTRUCTION | CLOSING SUMMER 2024



153 **WILSON** WEST
UNRIVALED. LUXURIOUS. CONDOS.

SUITE 306
COMBINED SUITE
1304 SQFT

starwardhomes.com



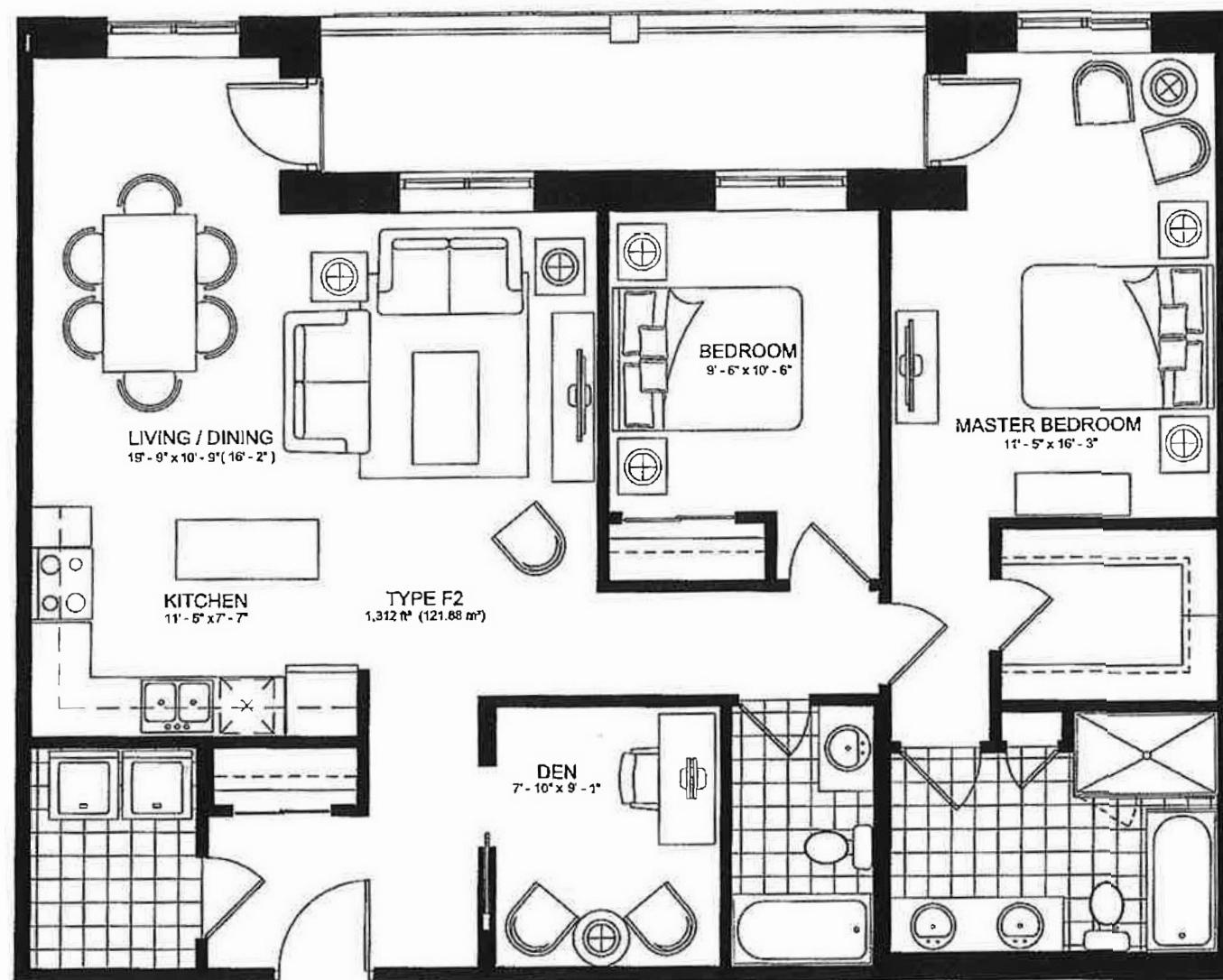
COMBINED SUITE

SUITE 306

1304 SQFT

2 BEDROOM, 2 BATHROOM PLUS DEN

100 SQFT BALCONY



PLUS OVER \$58K IN LUXURY FEATURES INCLUDING:

- Essential Potlight package with 20 LED potlights
- Beautiful two-toned luxury kitchen with deep fridge cabinet and gable, valance moulding, soft close hardware, extended height uppers, pot drawers, premium appliances
- Waterline for Fridge
- Modern colour, cabinetry, and hardware throughout
- Luxury vinyl plank flooring
- Additional parking space in underground garage
- Storage locker

UNIT 306: INTERIOR FINISHES



153 WILSON WEST



KITCHEN CABINETRY
UPPERS: LANCASTER
MDF 'CEMENT GREY'



BACKSPLASH -
CRISTALLO DOVE GREY
MATTE 2X12



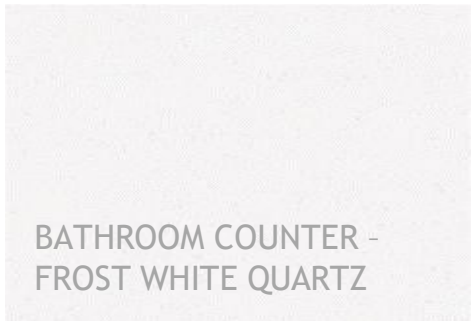
KITCHEN COUNTER -
K9922 QUARTZ



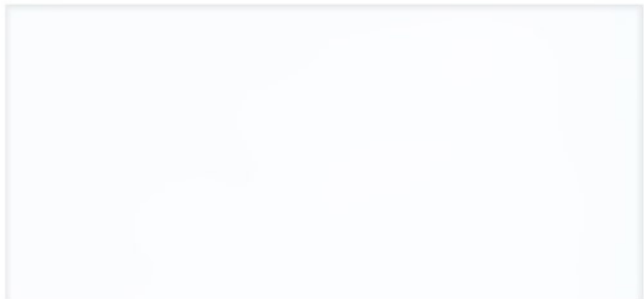
CABINET
HARDWARE
BP 293355-G10



PAINT - ARIA



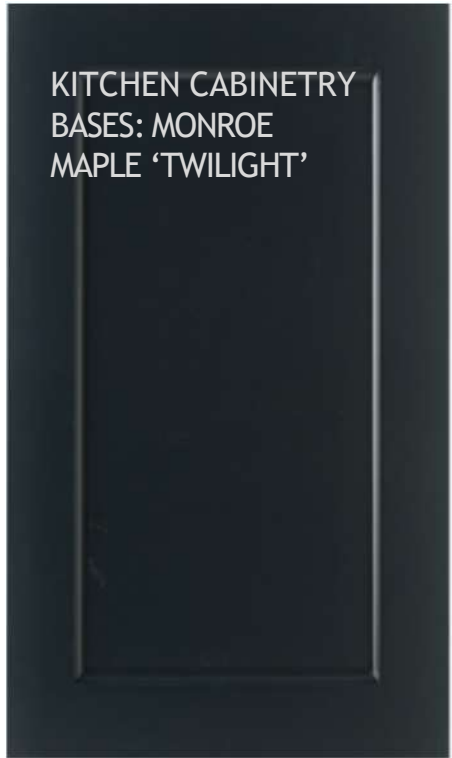
BATHROOM COUNTER -
FROST WHITE QUARTZ



MAIN BATH TUB WALL TILE -
C&D ARCTIC WHITE MATTE 8X20



BATHROOM CABINETRY
MONROE MAPLE 'TWILIGHT'



KITCHEN CABINETRY
BASES: MONROE
MAPLE 'TWILIGHT'



VINYL PLANK FLOORING
ULTRA 5G 'STORM CLOUDS'



MAIN BATH FLOOR TILE -
NEWCASTLE GREY MATTE 13X13



ENSUITE FLOOR & WALL TILE -
DREAM WHITE 12X24



**NOTE: COLOURS ARE FOR REFERENCE ONLY - ACTUAL SAMPLES MAY VARY. BUILDER MAY SUBSTITUTE PRODUCT OF EQUAL OR GREATER VALUE IF ORIGINAL SELECTION IS UNAVAILABLE FOR ANY REASON.



UNRIVALED LUXURY

153 Wilson West, designed specifically to highlight the magnificent architecture that makes the Ancaster Village so charming and sought-after, is luxury personified. Boosting a sophisticated charm, with contemporary details, and using a range of high-end modern finishes, along with the modern amenity spaces you have come to expect – gorgeous rooftop terraces, a stunning party room with personalized wine locker spaces, a fitness space for healthy living – 153 Wilson West is an extraordinary breath of fresh air.

