



# 16-290 EQUESTRIAN WAY IN RIVER MILL, CAMBRIDGE LEASING AVAILABLE

## THE CRANBERRY

### 3-STOREY TOWN IN BROOKLYN HEIGHTS 2

**1640 SQ.FT.**

**3 BED**

**2 FULL BATH**

**2 HALF BATH**



**FOR RENTAL INQUIRIES CALL 905.531.4924**

- Exterior door to street side covered terrace
- Exterior door from house to garage
- Railing on staircases at the living and bedroom levels
- Luxury vinyl plank flooring throughout living space
- Modern trim, door and hardware packages
- Convenient laundry on bedroom level
- Ground floor 2-piece bathroom
- High efficiency HRV, air conditioner, tankless hot water heater, air purifier and ecobee 3 lite thermostat – rental and maintenance program with Reliance Home Comfort

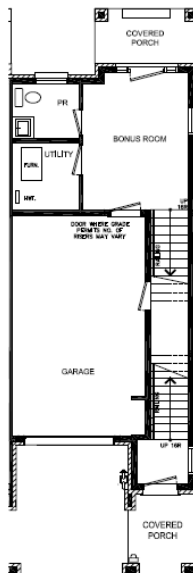
#### Bathrooms

- Ensuite: Acrylic shower base with tiled walls, quartz counter with undermount sink in vanity, designer upgraded Level 2 tile
- Main: quartz counters with undermount sink in vanity, designer upgraded Level 2 tile

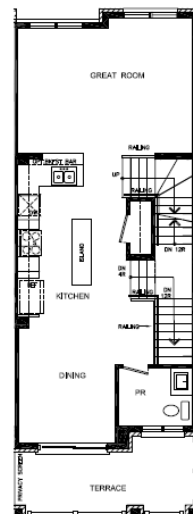
#### Open Concept Kitchen

- Designer upgraded Level Two cabinetry in kitchen complete with breakfast bar & extended height uppers
- Full suite of Samsung appliances, including counter depth fridge, electric smooth top range, dishwasher, Zephyr stainless hood vent and Whirlpool stackable washer/dryer

Ground Floor  
9' Ceiling



Second Floor  
9' Ceiling



Third Floor

