

15-155 EQUESTRIAN WAY, CAMBRIDGE RESIDENTIAL

THE
RIDGE
river mill

KEYSTONE
3-Storey Town

1915 SQ.FT.

3 Bed
2 Full Bath
2 Half Bath



LUXURY DESIGNER FEATURES

- Exterior door from house to garage
- Additional powder room on ground entry level
- Convenient laundry on bedroom level
- Luxury vinyl plank flooring on ground & living level
- Modern trim, door and hardware packages
- High efficiency 3 zoned HRV, air conditioner, tankless water heater and nest thermostat – rental and maintenance program with Reliance Home Comfort.

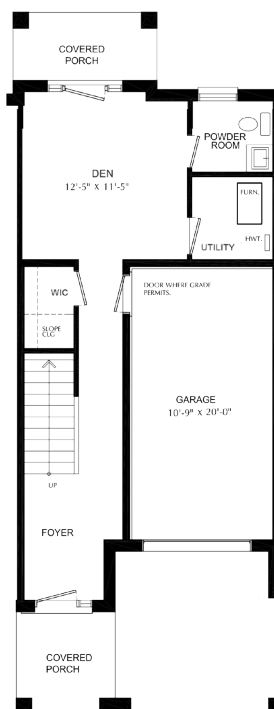
Bathrooms

- Ensuite: Tub/shower with tiled walls, quartz counter, Moen vichy faucet and undermount sinks in designer vanity cabinet.
- Main: Moen Vichy faucets, quartz counters in designer vanity cabinet.

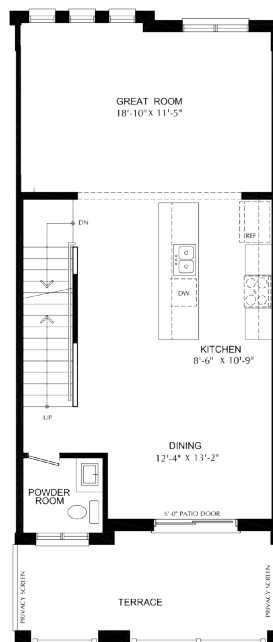
Open Concept Kitchen

- Designer kitchen complete with gorgeous breakfast bar, quartz counters and 9' ceilings.

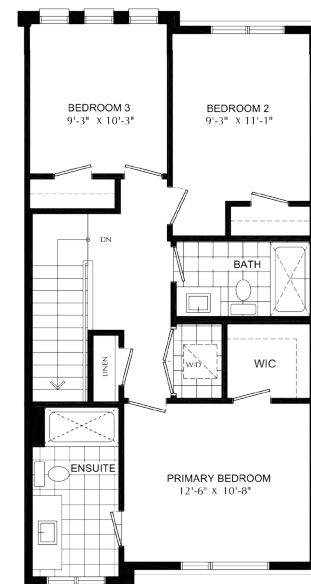
Ground Floor
9' Ceiling



Second Floor
9' Ceiling



Third Floor



*this unit will have a monthly Common Element Condominium Fee

starwardhomes.com



