

# 98 -155 EQUESTRIAN WAY, CAMBRIDGE RESIDENTIAL

THE  
**RIDGE**  
*river mill*

**DENVER**  
3-Storey Town

**1500 SQ.FT.**

3 Bed  
2 Full Bath  
2 Half Bath



## OVER \$20K IN LUXURY DESIGNER FEATURES

- Exterior door from house to garage
- Additional powder room on ground entry level
- Convenient laundry on bedroom level
- Luxury vinyl plank flooring on ground & living level
- Modern trim, door and hardware packages
- High efficiency 3 zoned HRV, air conditioner, tankless water heater and nest thermostat – rental and maintenance program with Reliance Home Comfort.

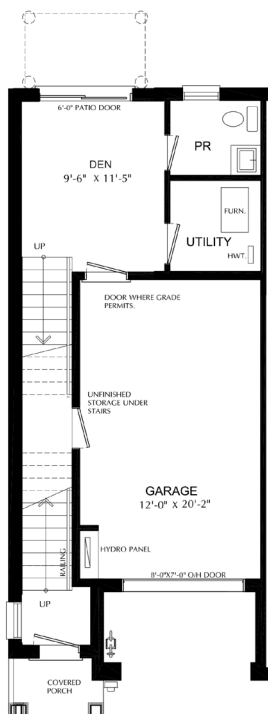
### Bathrooms

- Ensuite: Glass Shower with tile base and walls, quartz counter, Moen vichy faucet and undermount sink in designer upgraded vanity cabinet.
- Main: Moen Vichy faucets, quartz counters in designer vanity cabinet.

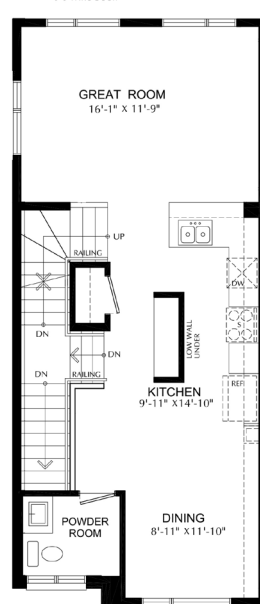
### Open Concept Kitchen

- Designer Upgraded kitchen complete with 9' ceilings, extended height uppers, large pantry cabinet, breakfast bar, island and quartz counters.

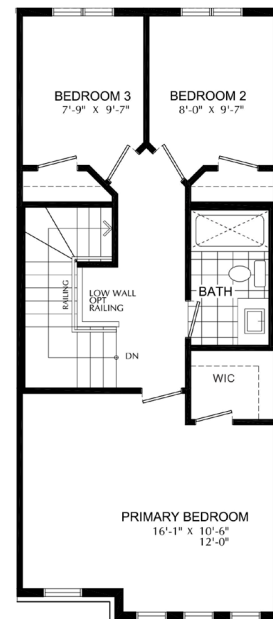
**Ground Floor**  
9' Ceiling



**Second Floor**  
9' Ceiling



**Third Floor**



\*this unit will have a monthly Common Element Condominium Fee

